

# 2022

# IN REVIEW:



## BROADENED HORIZONS: FROM ARCTIC TO ANTARCTIC

2022 has been a year of momentum, growth, and broadened horizons, both geographically and within Northwest Demolition's diverse service offerings. In a world still pushing for a return to normalcy, NWDD has been able to exceed our annual goals despite a slow start to the year. Most importantly, **2022 marks six consecutive years of zero safety incidents**, a metric we are extremely proud of as we perform high-risk, technically challenging projects around the globe.

Remaining consistent with the core principles of our ASRC Industrial family, **NWDD continues to seek out clients who share our commitment to Safety, Quality, and Value**, regardless of where they operate. As such, 2022 has brought us to the Arctic Circle, Argentine mountains, Puerto Rican beaches, Antarctic research stations, and of course a host of new locales throughout the United States.

We continue to expand the suite of custom-built, state-of-the-art robotic machinery in our arsenal, supporting clients predominantly in the Military Munitions Response Program (MMRP) and Unexploded Ordnance (UXO) removal fields, **increasing personnel safety and achieving production efficiencies of up to 14x compared to conventional methodologies.**

Our continued success is a testament to the quality and dedication of our expert team, spectacular trade partners, returning and new clients, and parent company in ASRC Industrial that shares our commitment to operational excellence.

We feel that we are building something special here at Northwest Demolition and are grateful that you are a part of this journey. **Here's to 2023!**



### Former Range Cleanup Robotic Services VIEQUES, PUERTO RICO

NWDD was contracted to provide robotic services for a range clearing effort in Vieques, PR. NWDD mobilized a specialized robotic excavator and armored command center to the remote jobsite. Functions performed included vegetation removal, excavation, target demolition, and winching activities. Due to setback distances, NWDD safely operated its remote equipment from over a mile away using a custom BVLOS repeater system.



### Honouliuli WWTP Facility Demolition EWA BEACH, HAWAII

NWDD returned for Phase 3 of this process facility demolition at the active HLIWWTP site, consisting of a solids dewatering building and incinerator structure containing a 70' top-hung boiler. NWDD mobilized a high reach excavator to systematically demolish the structures in place, less than 20 feet from the newly constructed treatment facility. The demolition was completed ahead of schedule and without impact to the surrounding plant.



### Decommissioned Reactor Facility Demolition PIQUA, OHIO

NWDD teamed with sister company RSI to perform legacy facility demolition and site improvements at a decommissioned reactor site constructed in 1963. NWDD strategically demolished site facilities and prepared the 44' below grade previously entombed reactor core and bio-shield for additional encapsulation. NWDD will return to site in 2023 to demolish the remaining 68' containment dome.



### McMurdo Station Demolition ROSS ISLAND, ANTARCTICA

NWDD returned for the second field season to continue selective and structure demolition operations supporting the ongoing modernization efforts at the ultra-remote research station.



### Remote Diamond Mine Decommissioning Assessment NORTHWEST TERRITORIES, CANADA

NWDD was contracted to perform a comprehensive decommissioning assessment for a remote diamond mine, serviced only once annually via a 200 mile long ice road. The assessment included detailed quantity takeoffs, method analyses, schedule development, and budgeting projections for the future complete removal of all site infrastructure.



### Lithium Mine Process Deconstruction SAN ANTONIO DE LOS COBRES, ARGENTINA

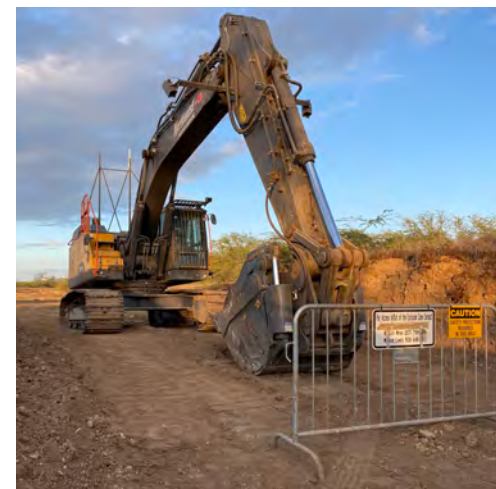
NWDD was hired to formulate a dismantling work plan for the removal of pilot plant components at a remote lithium mine in Northern Argentina. The site had significant challenges due to the remote location and elevation of 12,000 feet above sea level. NWDD crafted a work plan outlining sequence, logistics, and methodology for performance by a local contracting team. NWDD was retained to provide oversight of the dismantling process and provide safety, production, and workplan adherence of the selected contractor.

### NOTABLE PROJECTS:



### Ore Bunker Demolition NORTHERN IDAHO

NWDD was contracted for the strategic demolition of two concrete silo-type ore bins, house, and conveyors at an active mining site. NWDD completed the work in a highly congested MSHA site with no incidents or impacts to mine operations.



### Dredged Materials Consolidation WAIPIO PENINSULA, HAWAII

NWDD was contracted for the consolidation of dredged material spoils at a containment facility on O'ahu. NWDD mobilized a robotic excavator and articulated haul truck to safely sort, handle, and consolidate the MEC-containing debris. In total, over 15,000CY of material was moved remotely from within an armored command center.

### BY THE NUMBERS:



4 COUNTRIES



14 STATES



8 TIME ZONES



0 RECORDABLES

