

2024

IN REVIEW:

CELEBRATING 70 YEARS OF DEMOLITION EXCELLENCE



NOTABLE PROJECTS:

The end of this year concludes **70 years in business for Northwest Demolition & Dismantling**. This milestone achievement is a testament to our safety culture, high-quality professional team, and pursuit of customer partnerships that suit NWDD's unique skillset.

As we enter our next chapter, we look to continue our success in:

- Prioritizing safety as our top business priority through our Culture of Care program
- Continuing NWDD's organic growth while staying true to our small business roots
- Further development and expansion of our robotics platform
- Attracting and developing young talent in our organization

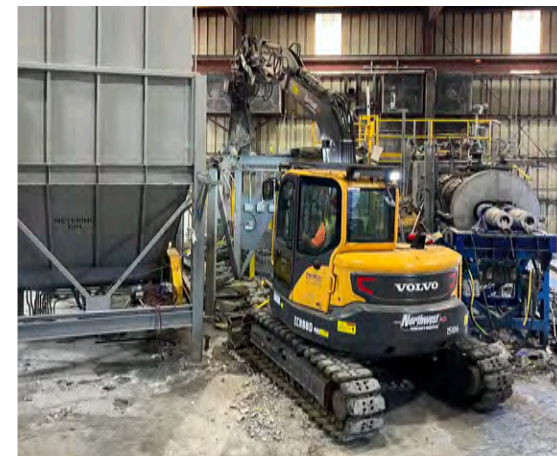
After more than 30 years of dedicated leadership, Richard Wayer will be stepping down as President. He will remain a vital part of the organization in a Senior Consultant role. He will be succeeded as President by David Williams, NWDD's current Vice President of Operations. Please join us in congratulating Richard on his exemplary career and welcoming David into his new role. **We look forward to continuing to build upon the legacy of strong leadership and innovation for another 70 years and beyond.**

Cheers to 2025!



Arbuckle Creek MEC Removal FROSTPROOF, FLORIDA

NWDD's Robotic Services was contracted to perform a MEC removal project at a small creek in central Florida. The NWDD team developed a work plan to excavate the creek bed using a robotic excavator and trommel screening bucket. The project was particularly challenging due to the soft substrate of the creek bottom and variation in water depth to more than 8-feet. In total, over 90 MEC items were safely removed from the creek bed without incident.



Agiliyx Recycling and Asset Recovery TIGARD, OREGON

NWDD was retained to provide an end-of-lease plant removal solution for a polystyrene recycling company. NWDD provided a solution-based approach to inventory, market, and sell plant assets and scrap to reduce the overall project cost. NWDD provided the rigging and asset removal, organized an equipment auction and subsequent liquidation sale. Once all assets were removed, NWDD completed interior demolition and building repairs required by the property owner.



Caltech Submillimeter Observatory Decommissioning MAUNAKEA, HAWAII

NWDD partnered with Goodfellow Bros for the decommissioning of the Caltech Submillimeter Observatory atop the summit of Maunakea. Following the successful relocation of the telescope to Chile, NWDD conducted the removal of all site components including the iconic silver geodesic dome and on-site support buildings from the remote project site nearly 13,000 feet above sea level. Following the removal effort, the site was restored to natural conditions and will be monitored to document passive repopulation over the next 3 years. This decommissioning work was completed safely and without incident or impact to the sensitive surrounding environment.



Demolition of Uncle Billy's Hilo Hotel HILO, HAWAII

NWDD partnered with Isemoto Contracting for the removal of the old Uncle Billy's Hilo Hotel under an Emergency Proclamation issued by the Governor of Hawaii. The four-story, 146-room structure has fallen into disrepair and presented serious health and environmental risks to the surrounding community. NWDD mobilized a fleet of highly specialized demolition equipment to safely complete the removal of the 60-year-old structure adjacent to two operating hotels and a sensitive waterfront park. Due to meticulous processing and material sorting operations, NWDD achieved a 90% landfill diversion rate and completed the demolition work nearly 2 months ahead of schedule.



CR3 Reactor Internals Removal CRYSTAL RIVER, FLORIDA

NWDD's Robotic Services was retained to engineer and design a solution for the reactor containment building internals removal for a 1000MW commercial nuclear plant. Due to the substantial mass of the concrete and steel of the internals, the NWDD team sought to use a 50 ton fully robotic excavator with heavy demolition attachments. The unit would need to be hoisted from grade to a height of more than 100'. Our group worked with our engineering team to fully develop a rigging bridle robust enough to support the machine in a dynamic demolition environment. In addition, a hydraulically actuated chassis beneath the machine was designed and fabricated by NWDD to stabilize and grasp objects below. These tools allowed for demolition of the reactor components in a top down arrangement utilizing the existing overhead polar crane in the reactor containment building.



Klamath River Renewal Project HORN BROOK, CALIFORNIA

NWDD was contracted to remove the Copco #1 Powerhouse, one of the powerhouses associated with the Klamath River Renewal Project. Interior equipment, including generators, turbines, bridge cranes, transformers, piping, and penstocks, was removed from the powerhouse structure concurrently with structural demolition. This renewal effort was the largest river restoration project in US history, involving the removal of four dams on the Klamath River in an effort to restore 38 miles of river back to a natural free-flowing condition, resurrecting environments for native fish and migratory birds.

BY THE NUMBERS:

